

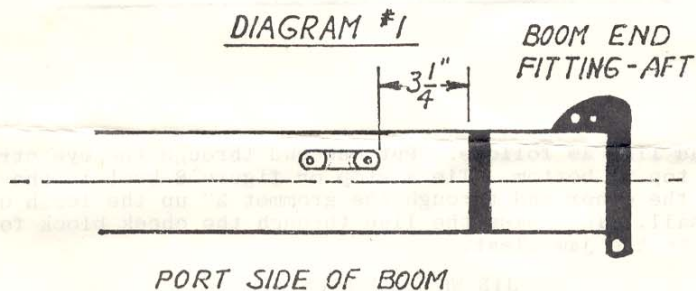


APOLLO SAILBOAT

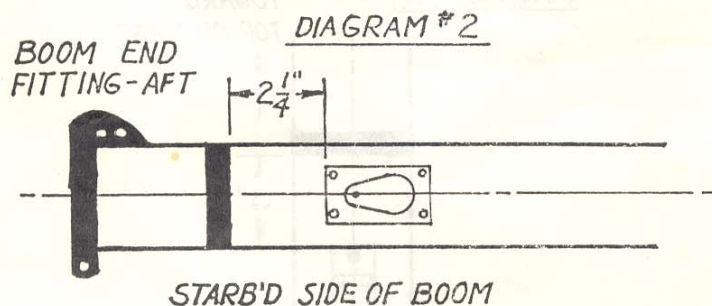
JIFFY REEFING KIT
ASSEMBLY INSTRUCTIONS

PARTS NEEDED: #39105 - Jam Cleat
#39106 - Cheek Block
#43060 - Eye Strap
2 - #8 - Self-Tapping Screws 1" - Flat Head
6 - #10 - Self-Tapping Screws 5/8" - Round Head

1. Locate parts.
2. Drill boom and mount the eye strap so that the aft edge of the strap is $3\frac{1}{2}$ " forward of the forward edge of the black band near the aft end of the boom. The strap should be just above the centerline on the port side of the boom. See Diagram 1.

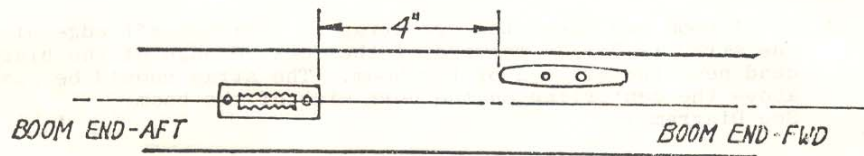


3. Drill boom and mount cheek block so that the aft edge is $2\frac{1}{4}$ " forward of the forward edge of the black band near the end of the boom. The cheek block should be centered over the centerline on the starboard side of the boom. Be sure that the roller end of the block is forward. See Diagram 2.



4. Drill boom and install jam cleat on starboard side of boom. Suggested placement; aft screw should be 4" forward of the forward edge of the outhaul clam cleat. Jam cleat should be above the centerline on the side of the boom. Be sure the jamming end of the cleat is aft. See Diagram 3.

DIAGRAM #3



5. Thread line as follows: Put one end through the eye strap from top to bottom. Tie a stop or figure 8 knot in the end. Lead the other end through the grommet 2" up the leech of the sail. Then pass the line through the cheek block forward to the jam cleat.

JIB WHISKER POLE KIT

- 1A. Assemble kit per manufacturer's instructions. Install mast fitting. Suggested location; bottom edge of mast fitting should be 3" below the top edge of black mast band near the boom. The mast fitting should be on the front of the mast.

DIAGRAM #1A

